



Sarex Overseas
Sarex stands for quality Products!

UTILITIES & SERVICE EQUIPMENTS



fchem@sarex.com
www.sarex.com

CONTENTS

01	BOILER	03
02	NITROGEN PLANT	03
03	AIR COMPRESSOR	03
04	COOLING TOWER	03
05	CHILLED BRINE PLANT	04
06	DG SET	04
07	TRANSFORMER	04
08	THERMIC FLUID HEATER	04
09	CHILLED WATER PLANT	05



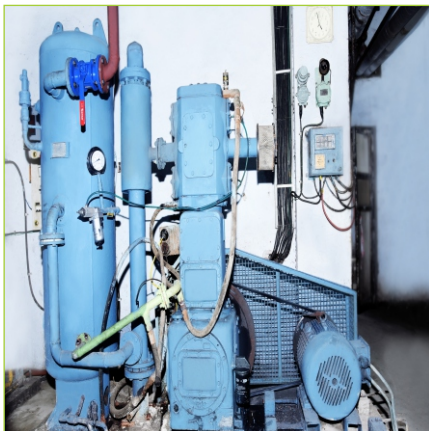
01 BOILER

- ❑ No. of Boiler - 1
- ❑ Steam Generation Capacity - 6 Ton / Hour
- ❑ Make - Thermax Limited
- ❑ Model - SM-60 DH / 32
- ❑ Fuel - Natural Gas / Furnace Oil
- ❑ Control Panel - Available with necessary Safety Interlocks
- ❑ Location - Utility Area



02 NITROGEN PLANT

- ❑ No. of Nitrogen Plant - 2
- ❑ N2 Generation Capacity - 70 NM3 / Hour & 25 NM3 / Hour
- ❑ Make - PSA Nitrogen Ltd & Gastek Engineering Pvt. Ltd.
- ❑ N2 Purity - 99.5%
- ❑ Safety Interlock - Output to receiver stop if O2 content more than 0.1%
- ❑ Available N2 Pressure - 5 to 7 Kg / Cm2
- ❑ Location - Utility Area



03 AIR COMPRESSOR

- ❑ No. of Air Compressor - 2
- ❑ Capacity - 100 CFM
- ❑ Make - Chicago Pneumatics
- ❑ Available Air Pressure - 5 to 7 Kg / Cm2
- ❑ Location - Utility Area



04 COOLING TOWER

- ❑ Available Cooling Tower - 5
- ❑ Capacity - 650TR, 250TR, 170TR
- ❑ Make - Himgiri Cooling Towers
- ❑ Location - Utility Area & Plant-2 Building Terrace



05 CHILLED BRINE PLANT

- ❑ Available Brine Plant - 1
- ❑ Capacity - 50 TR at -20°C
- ❑ Make - Kirloskar Ltd.
- ❑ Control Panel - Available with necessary Safety Interlocks
- ❑ Location - Utility Area



06 DG SET

- ❑ Available DG Set - 2
- ❑ Capacity - 500 KVA & 750 KVA
- ❑ Make - Supernova
- ❑ Fuel - Diesel
- ❑ Output - 440V Ac, 50Hz
- ❑ Location - Utility & Plant-1 Area



07 TRANSFORMER

- ❑ Available Transformer - 1
- ❑ Transformer Type - Step Down Transformer
- ❑ Make - M. P. Transformer
- ❑ Capacity - 1500 KVA
- ❑ Input Voltage - 33000 V AC
- ❑ Output Voltage - 440 V AC, 50Hz
- ❑ Location - 33KV HT Yard



08 THERMIC FLUID HEATER

- ❑ No. Thermic Fluid Heater - 1
- ❑ Model - TPCM-02 / 347
- ❑ Make - Thermax Limited
- ❑ Capacity - 2,00,000 KCal / Hour
- ❑ Fuel - HSD
- ❑ Control panel - Available with necessary - Safety Interlocks
- ❑ Thermic Fluid Used - Hytherm 500
- ❑ Location - Utility Area



09 CHILLED WATER PLANT

- ❑ Available Chilled Water Plant - **1**
- ❑ Capacity - **200 TR at 7°C**
- ❑ Make - **Blue Star**
- ❑ Control Panel - **Available with necessary Safety Interlocks**
- ❑ Location - **Utility Area**

C E R T I F I C A T I O N S



**ISO
45001:2018**



**ISO
14001:2015**



**ISO
9001:2015**



**ECOVADIS
SURVEY**



**ENV. HEALTH
AND SAFETY**



**TWO STAR
EXPORT HOUSE**



501 - 502, Waterford Building,
'C' Wing, C. D. Barfiwala Marg,
Juhu Lane, Andheri (W),
Mumbai - 400 058, India.



+91 22 6128 5566
+91 22 4218 4218



www.sarex.com



fchem@sarex.com